

DUNHAM PRODUCTS

By Ginny Mone

In 1944 Joseph Klukan Sr. started Dunham Products in a two car garage. As business grew, in 1946, they became incorporated and moved into the building on Dunham Rd. In 1983, the location on Kick Rd. was built to accommodate further growth. Then, in 2009 another move was needed. This is when Dunham Products moved into their present facility, which is located on Northfield Rd. (still in Walton Hills). The family are loyal villagers and businessmen, growing but never leaving the Walton Hills area. They are a company that stands for quality and customer service above all else.

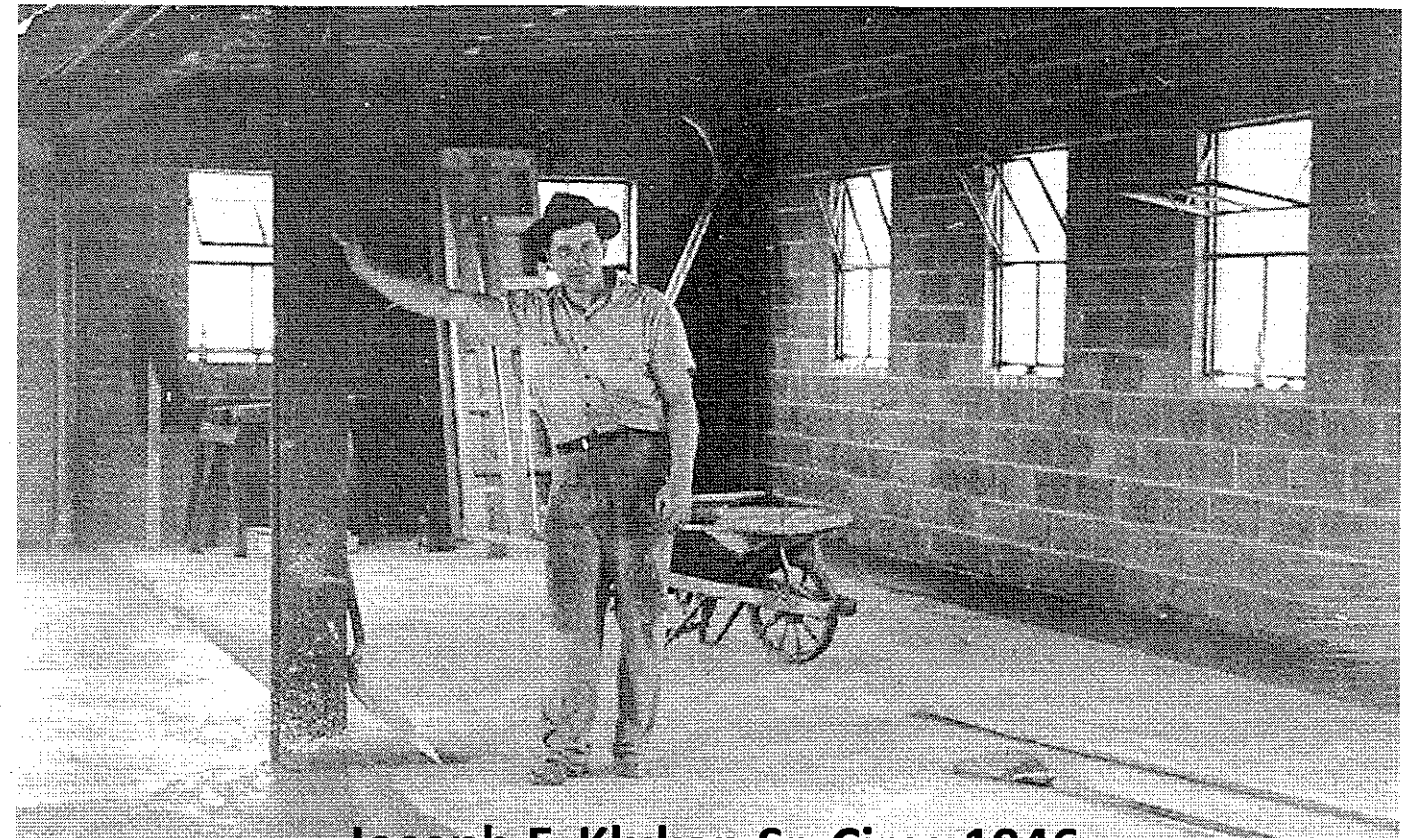
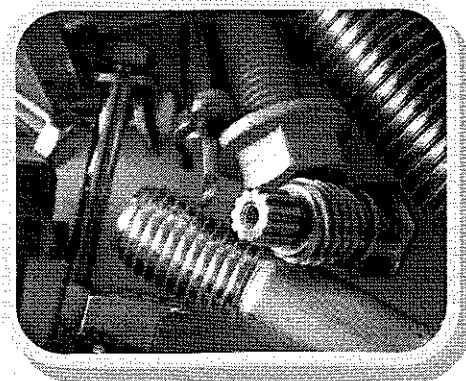
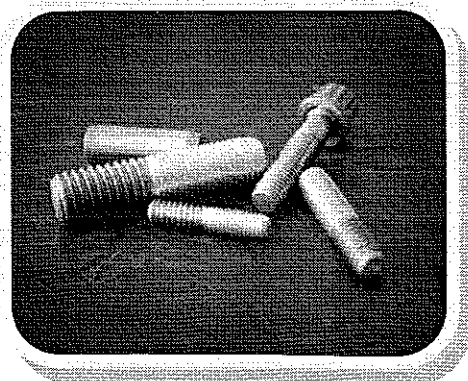
Dunham Products has grown in the aerospace fastener industry and has branched out to include many other fastener applications.

With this move to the Northfield Rd. facility, they have been able to add machines and personnel to keep up with their customers' growing demands. With the accessibility of this location to Cleveland and the space to branch out, Dunham now offers complete manufacturing and secondary processes with quick turnarounds.

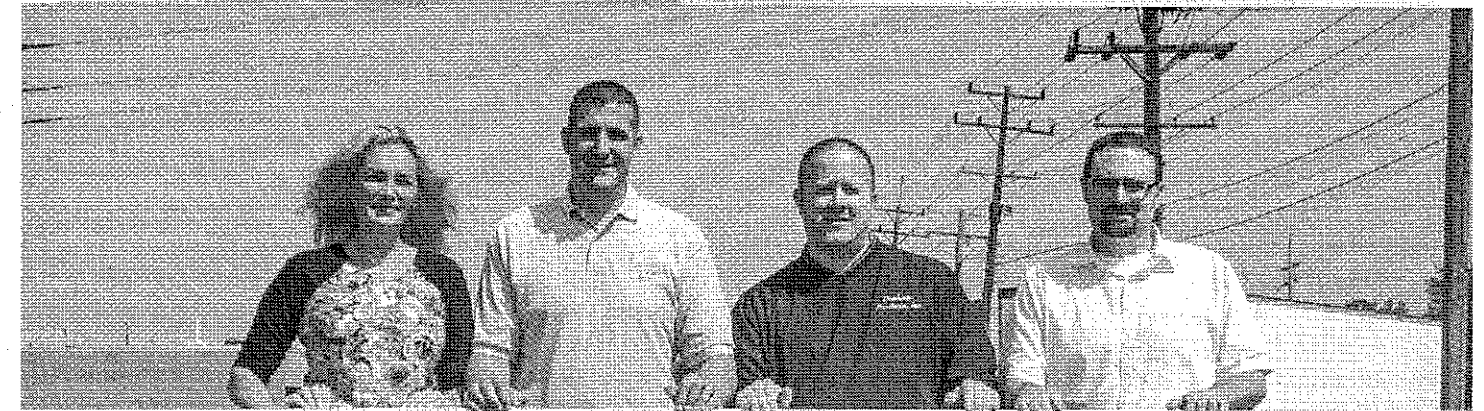
At present, Joseph F. Klukan II has taken his father's seat as President and Owner. He is the 3rd generation in this capacity.

He continues the family tradition in driving the company forward to expand to new markets and offer new services while focusing on growth for his current customers' needs. With his latest family addition of two twin boys in January, 2012 and a daughter in July, 2013, Joe holds firm to his family value of enhancing his business for generations to come. He and his lovely wife, daughter and twins live on Stuble Lane.

With manufacturing dwindling as an American commodity, Dunham Products, Inc. is a strong, family built, Walton Hills, Ohio company that is standing tall and holding firm now and into the future.



Joseph F. Klukan Sr. Circa 1946



Dunham Products, Inc.

Manufacturer of High Strength Fasteners

Since 1946

7400

Sarah Johnson, Joseph Klukan, Jay Maslanka, Owen Maxwell